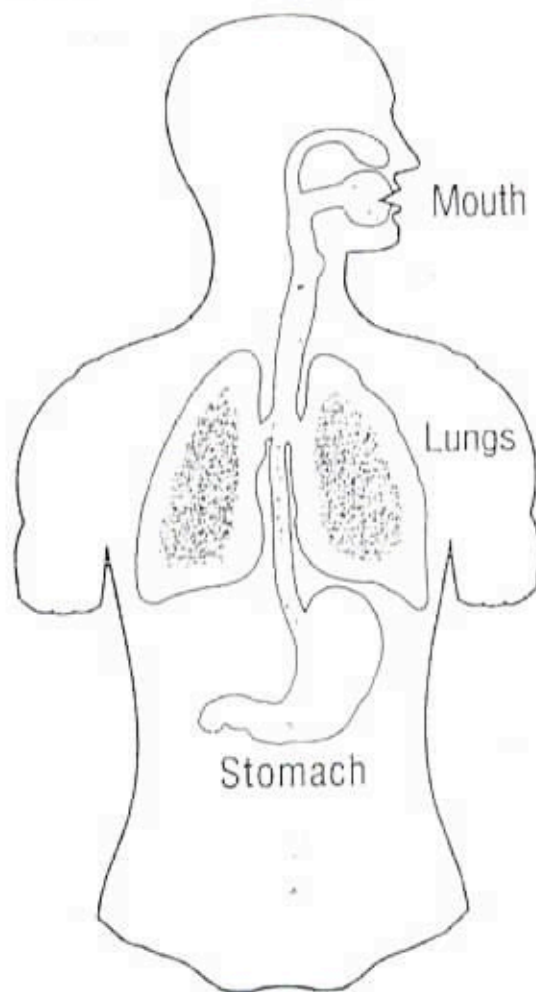
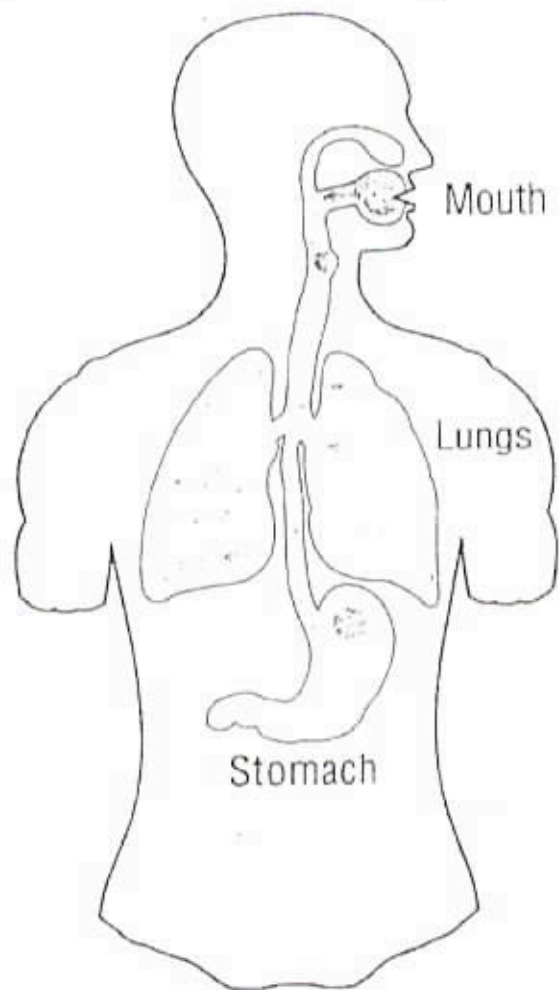


MDI Without Spacer

MDI With Spacer



BENEFITS OF USING A SPACER/CHAMBER DEVICE

- Using an (MDI) Metered-dose inhaler without a Spacer/Chamber Device may increase the delivery of the aerosol drug medication in the mouth, throat, trachea, and stomach which may cause potential side effects.
- Using an (MDI) Metered-dose inhaler with a Spacer/Chamber Device increases the delivery of the aerosol drug medication deep into the lungs for an effective therapeutic benefit.

*For more detailed information, see *Asthma Magazine*, July/August 1997, Page 5-7 the article entitled "Spacers: A Valuable Tool for Asthmatics"

© Respiratory Delivery Systems, Inc., 2002